



Willoughby Transitions

November 22, 2018

Willoughby Middle School Catchments

**Team Meeting at
Yorkson Creek Middle School
November 22, 2018**



Phyllis Atkins

PURPOSE MISSION

TO
INSPIRE ALL LEARNERS
TO REACH THEIR FULL
POTENTIAL AND CREATE
A POSITIVE LEGACY
FOR THE FUTURE

Shape of the Evening

- Introductions
- Peter Ewart
- Resources and Time
- Creating Culture
- Work Time: Establishing Priorities
- Share Out Next Meeting



Vision

A Focus on Students

- Caring for the social – emotional well-being of children
- Being mindful of the physical well-being of children
- Providing vibrant and sustainable learning opportunities for all children



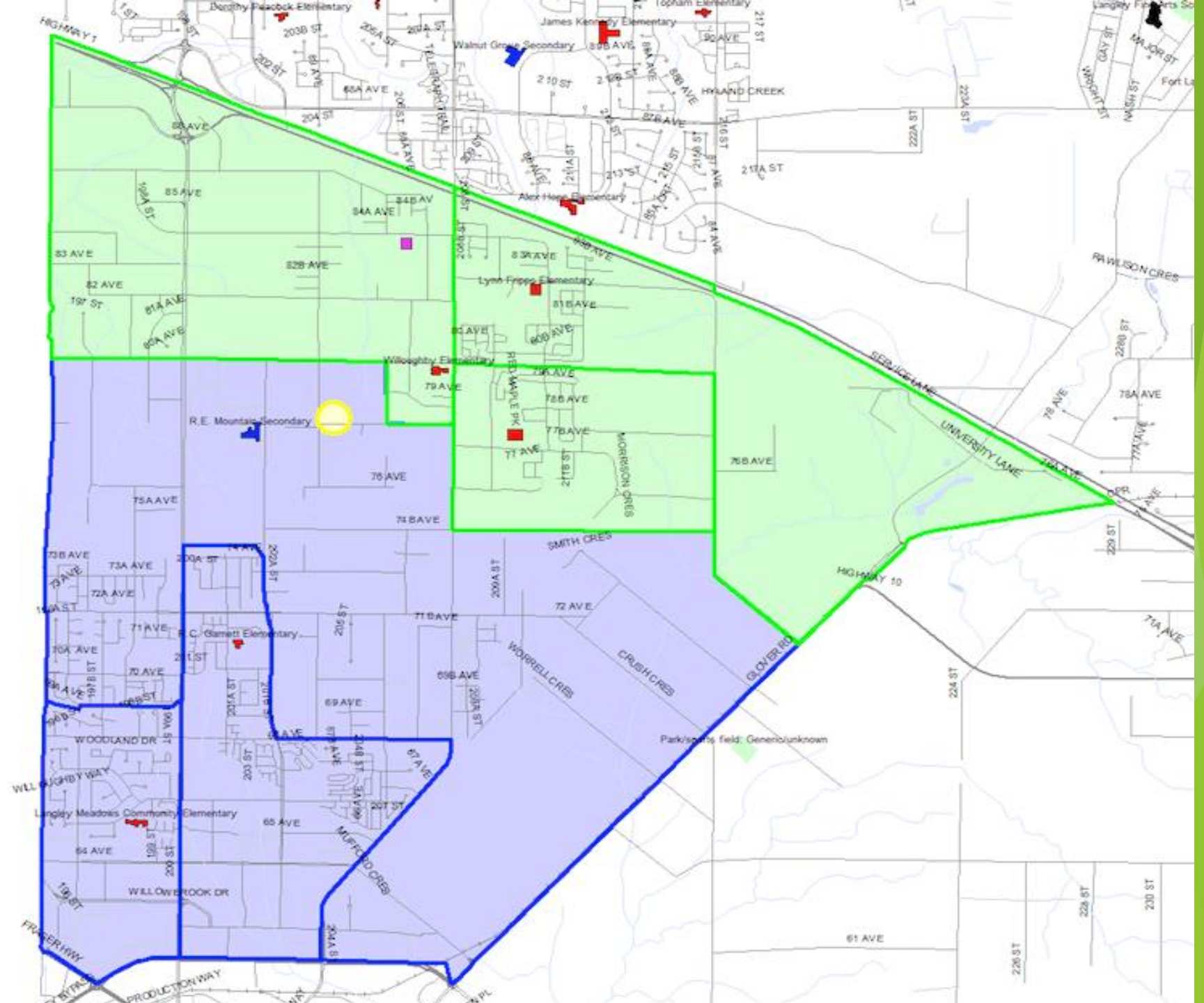
Guiding Principles for an Effective Transition Process

- That the transition process be one of integrity where honesty and transparency are of utmost importance.
- That trust between communities and the District be maintained throughout the process.
- That the District listen to communities and sincerely reflect on feedback and ideas.
- All stakeholders value and honour each other and treat all with respect.

Proposed Willoughby Middle Catchment

 Yorkson Creek Middle

 Peter Ewart Middle









PURPOSE MISSION

**TO
INSPIRE ALL LEARNERS
TO REACH THEIR FULL
POTENTIAL AND CREATE
A POSITIVE LEGACY
FOR THE FUTURE**



Middle School Pillars & Core Values



LANGLEY SCHOOL DISTRICT



- The middle school philosophy offers the developmentally appropriate environment to meet the unique needs of our students
- Students learn best when they feel best
- By fostering values of belonging and connectedness at a young age students will carry these values to adulthood
- Students are academically more successful when all of their developmental needs are understood and met

Transition Timeline

- **June 2018:** Classes were built with care and consideration of the upcoming transition to Peter Ewart Middle School
- **December 2018:** Principals will be announced for both Middle Schools
- **January 2019:** Registrations for Peter Ewart Middle School and Yorkson Creek Middle School will be completed at Yorkson Creek with a verification of address (*Taking in consideration of extenuating circumstances)

Transition Timeline

- **February 2019:** Staffing of Peter Ewart Middle School begins
- **February 2019:** Transition activities for Peter Ewart include the choosing of a mascot, colours, values and student mission statement
- **February 2019:** Administration visits Peter Ewart Middle School feeder schools to complete transition activities with the future Grade 6 students, share the opportunities of the new Middle School and answer student questions
- **April 2019:** Logo, mascot and colours revealed
- **April 2019:** Button blanket activity involving future Peter Ewart Middle School students

Transition Timeline

- **April 2019:** First Grade 5 visits to both Middle Schools
- **April/May 2019:** Begin Peter Ewart Middle School small group student tours with leaders from R.E. Mountain
- **April/May 2019:** Parent and student information night and tour of Peter Ewart Middle School
- **May 2019:** Community building at location to be determined
- **May 2019:** WEB applications and selections (for both schools)
- **May /June 2019:** Peter Ewart Middle School Spirit Wear Order
- **June 2019:** Culminating activity as Yorkson Creek Middle School



Principal of RE Mountain- Mr. Magdy Ghobrial

Current Opportunities



Let's

Talk

Culture





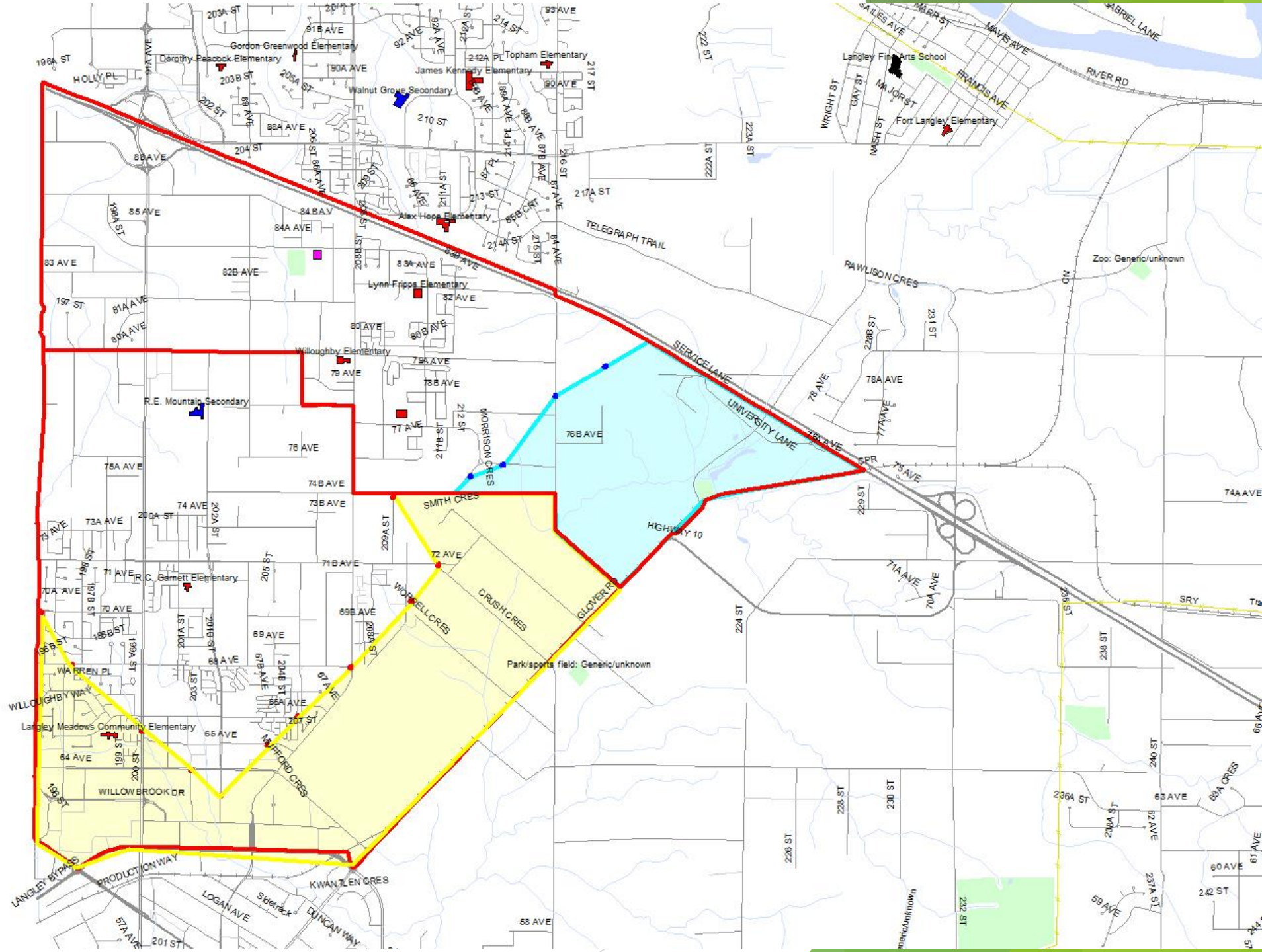






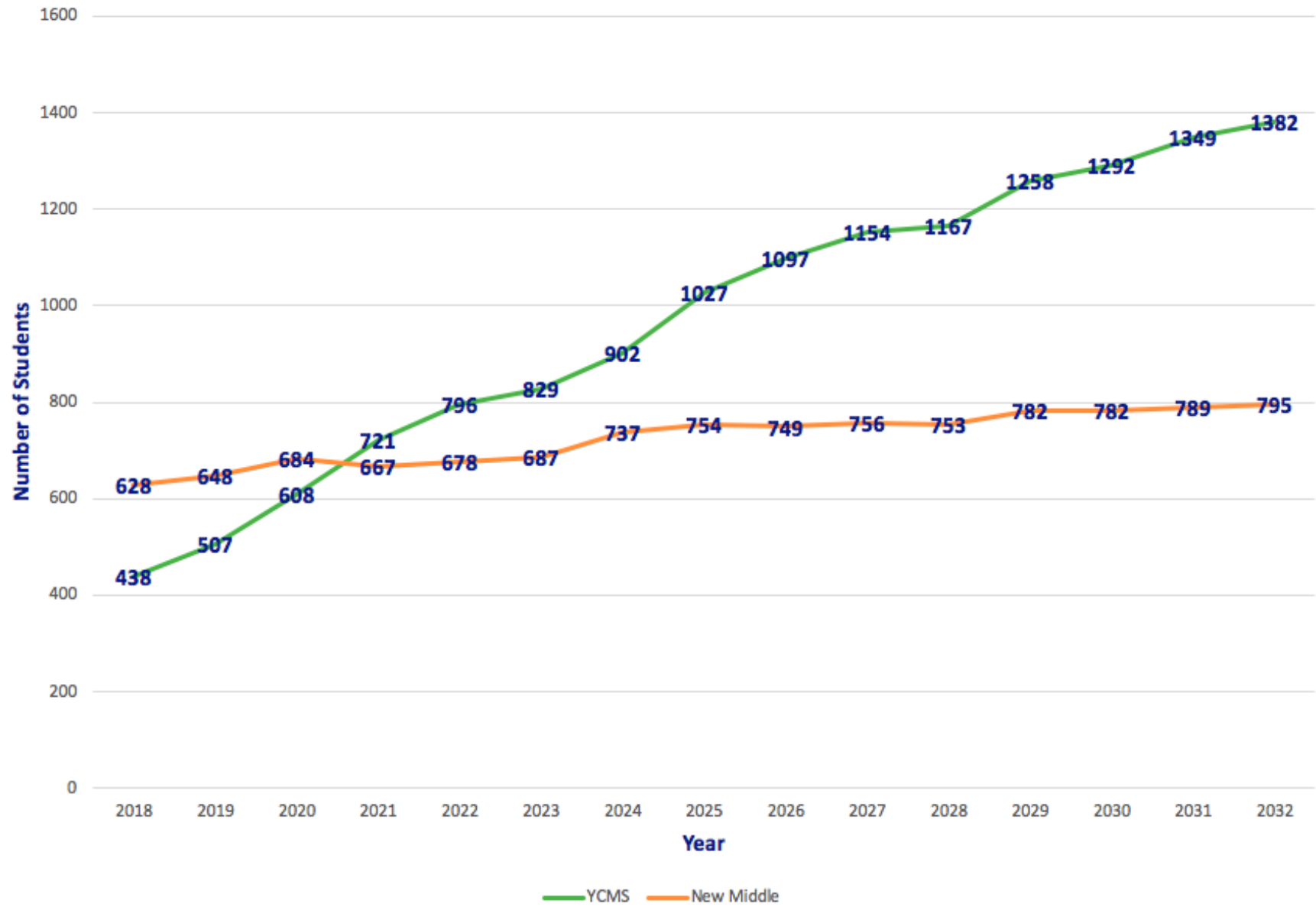
Bussing

-  Yorkson Creek
-  Peter Ewart





Projected Middle School Enrolments (Willoughby)



Creating Priorities

➤ **Safety**

- Township Recommendations

Paul Cordeiro / Phillis Giovani / Golda Janzen

➤ **Transportation**

- Which regions would we need to consider first?

Vanessa Jaggi / Adam Woelders

➤ **Facilities**

- Playground, Expos

Magdy Ghobrial / Shind Chand

➤ **Programming**

Kevan Reeve / Kim Anderson

➤ **Culture**

Natalie Roberts / Stephanie Labby

➤ **Flexibility and Choice**

- Cross Boundary Students
 - ▶ Not by Community
 - ▶ Needs Assessment

Calvin Leung / Karin Muuren

Questions ?

