

Willoughby Middle School Boundary PAC Information Evening



**SD35 Willoughby Community PAC Presentation
June 13, 2018**

Willoughby Middle School

1. Opening/ Introductions
2. Timeline
3. Context
4. Drawing Boundaries-District Guidelines
5. Capital Plan
6. New Willoughby Middle School Opportunities/
Considerations
7. Community Meeting
8. Questions
9. Feedback

Acknowledgment



Thank you!

A Lens for Transition

- Caring for the social - emotional well-being of children
- Being mindful of the physical well-being of children
- Providing vibrant and sustainable learning opportunities for all children

Guiding Principles for an Effective Transition Process

- That the transition process be one of integrity where honesty and transparency are of utmost importance.
- That trust between communities and the District be maintained throughout the process.
- That the District listen to communities and sincerely reflect on feedback and ideas.
- All stakeholders value and honour each other and treat all with respect.

Principals and Vice Principals

- ▶ Kim Anderson, Golda Janzen→Lynn Fripps–
- ▶ Adam Woelders, Meena Sangha→RC Garnett
- ▶ Vanessa Jaggi, Yvonne Brenneman→Langley Meadows
- ▶ Phillis Giovanni, Karin Muuren→Willoughby
- ▶ Calvin Leung, Jennifer Huber→Richard Bulpitt
- ▶ Kevan Reeve, Stephanie Labby, Natalie Roberts→Yorkson
- ▶ Magdy Ghobrial, Brian Leonard Chandra Balakrishnan→RE Mountain

Willoughby Boundary District Transition Team

- Mal Gill, Assistant Superintendent
- Shind Chand, Assistant Secretary Treasurer
- Sam Muraca, District Principal, Educational Planning
- Michelle Guillou, District Principal HR
- Ken Hoff, Communications Manager
- Christine Sainsbury, Manager, Planning & Financial Control

Schedule for Transition

Date	Event
June 13, 2018	Small Group PAC Meeting
September 2018	Transition Evening Meeting
Fall 2018	Willoughby PACs and Principals
Fall 2018	Recommendations to the Board



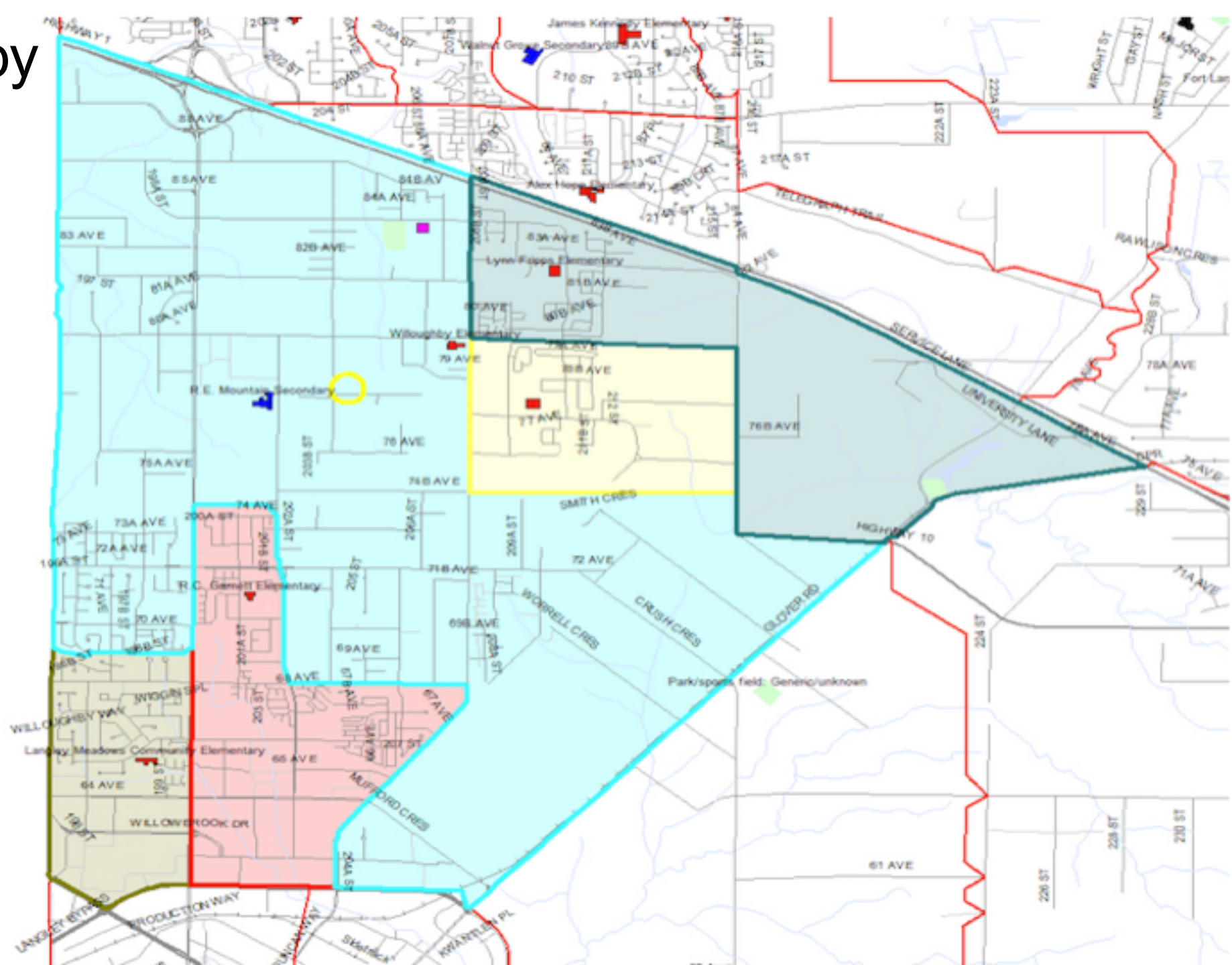
Opportunity - New Middle School

- High School opening in September
- REMSS will become the new middle school
 - With growth comes opportunity
 - With opportunity comes growing pains
- Inform the Community:
 - Transition to a new landscape (2 middle schools)
 - What information does the community wish to share?

Working Groups

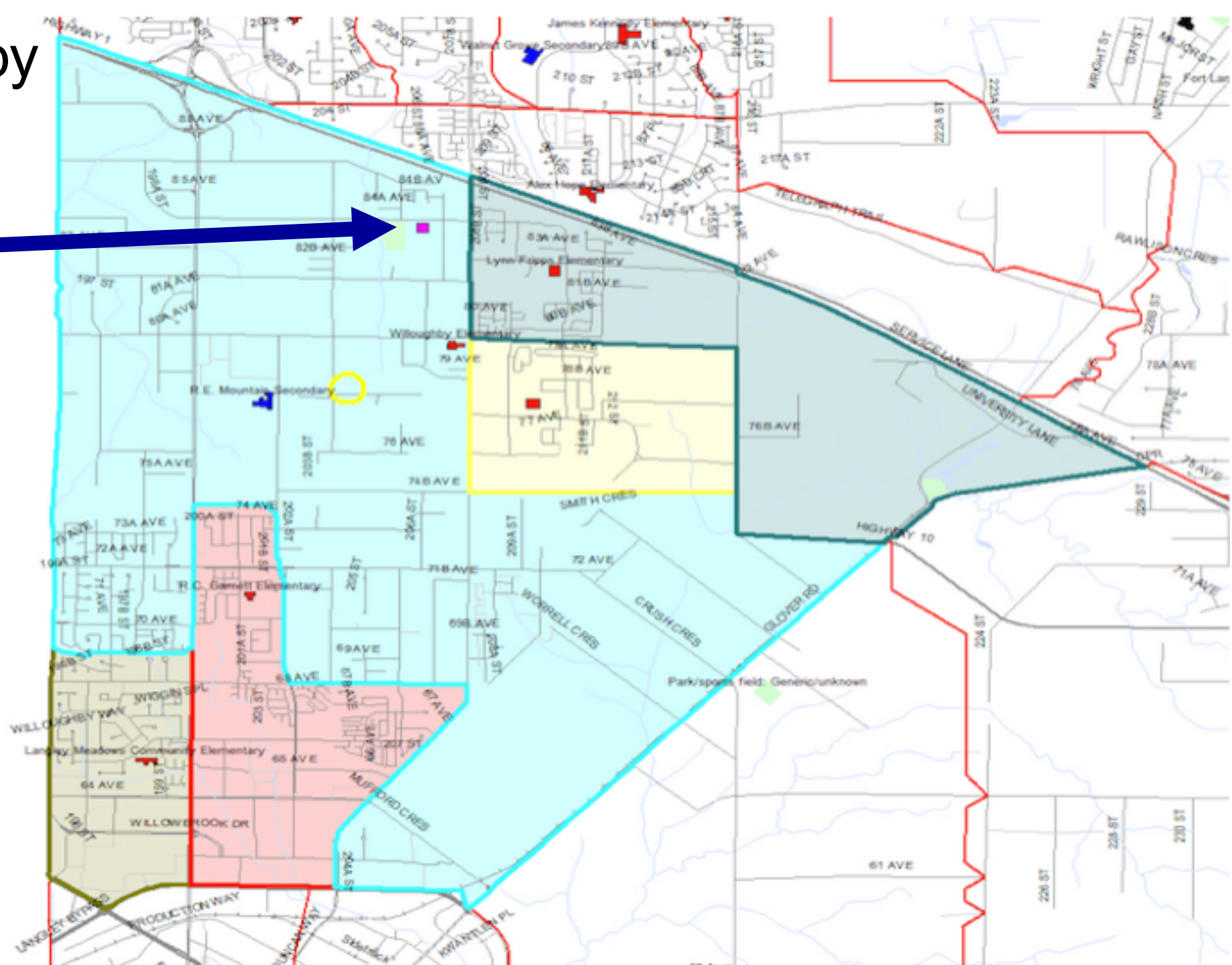
- What are some additional considerations we should surface for the community meeting?
- What information does the community need to know regarding opportunities and challenges for the New Middle School?
- What are considerations for transition for students between and within the middle schools?

Current Willoughby Catchment



Current Willoughby Catchment

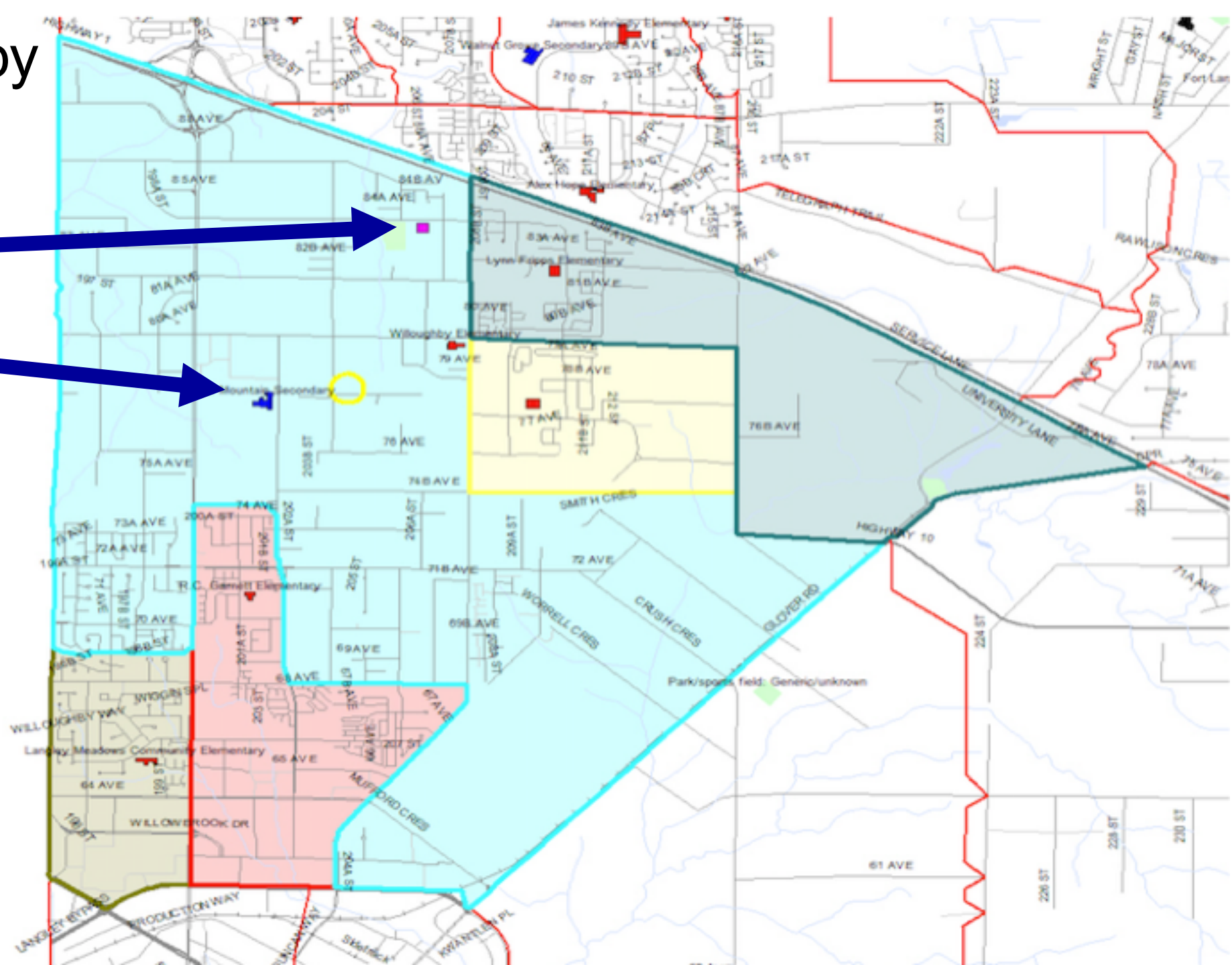
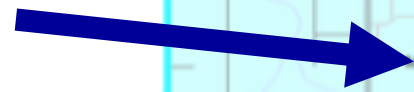
Yorkson Middle



Current Willoughby Catchment

Yorkson Middle

Willoughby Middle

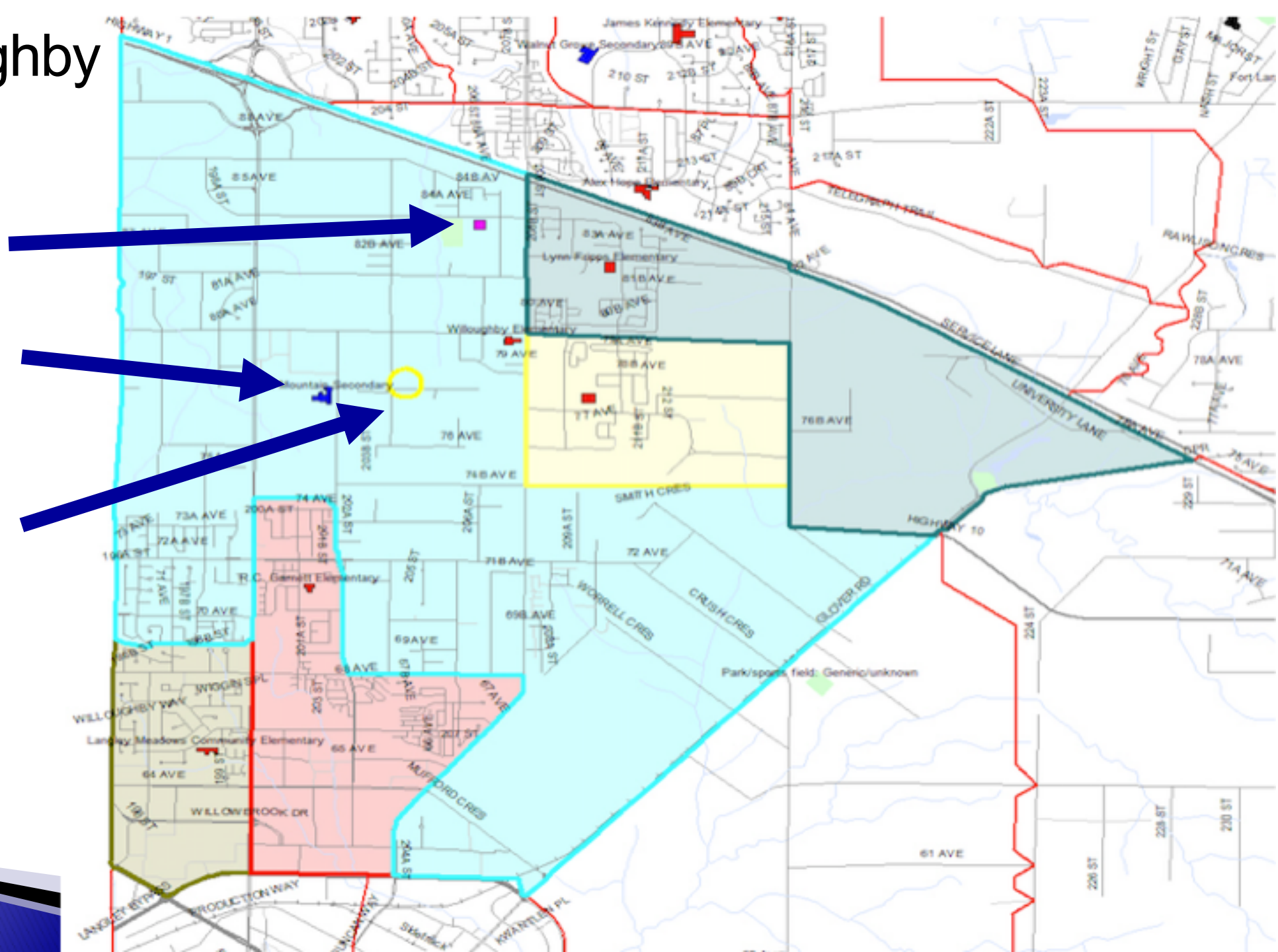


Current Willoughby Catchment

Yorkson Middle

Willoughby Middle

Land Purchase



Past Community Engagement

- ▶ From October 20, 2015
- ▶ Board of Education Meeting – June 16, 2015
 - “That the Board of Education approves that staff work with the community, schools and the Township of Langley to maintain the current configuration of schools (K–5, 6–8, 9–12) on the Willoughby slope”
 - “That the Board of Education requests that staff begin the process, as outlined in the “Willoughby Slope Spring 2015 Consultation” report, of re-drawing school catchment boundaries on the Willoughby slope for the 2017–2018 school year.”

Past Community Engagement

- ▶ www.sd35.bc.ca
 - Community Engagement
 - Willoughby Slope & Willoughby Slope Catchments

Past Community Engagement

- ▶ From slide 8
- ▶ “2017 and beyond
 - ... Potentially require catchment boundaries for a second middle school”

Past Community Engagements

- ▶ From February 23, 2016
- ▶ Last slide:
 - “Over the next few years the School District will have to monitor and manage enrolment, capacities, facilities and catchments in order to respond to the development in this rapidly developing area”
 - “The District will continue to work with the Ministry, advocating for future schools but also recognizes that the growth will continue while those processes unfold.”

Capital Plan – Willoughby

- School Requirements based on LTFP:
 - 2 Secondary Schools
 - 4 Middle Schools
 - 11 Elementary Schools
- District purchased future Elementary site in SW Yorkson
- First priority in 5 year capital plan is to build SW Yorkson Elementary school
- Ministry has requested further investigation into land for future Elementary school at NE & SW Latimer
- 5 Year Capital Plan has a request for land acquisitions for Elementary, Middle & Secondary

Yorkson Creek Middle School

➤ Official Capacity of YCMS	750 students
➤ Currently enrolment	1,020 students
➤ Projected for 2018	1,066 students
➤ Projected for 2019	1,155 students

Demographics

- Total Yorkson Population Projection
- Projection of Student Enrolment by middle school
- Elementary School Data Grades 4 and 5
- Future enrolment in elementary

Drawing Boundaries: Considerations

- Current Langley students who live in the catchment(s) that will be affected by boundary change
- Current Langley students who attend the schools within the affected catchments
- Pre school children residing in the catchment area(s)
- Local knowledge of where housing is being built
- Major roads and natural boundaries (ie. creeks)

Drawing Boundaries: Considerations

- Minor roads
- Safe walk routes
- Transportation
- Choice programs
- Family of schools
- Local opinions
- Any other unique issues that may be relevant

New Middle School

- What information does the community need to know regarding opportunities and challenges?
 - Exploration (fine arts and applied skills)
 - Building design
 - Athletics
 - Middle Pillars (looping, teaming, WEB)
 - PAC
 - Presentation

Considerations

- Safety
 - Transportation
 - Playgrounds
 - Pre-transition activities/
considerations
 - Drawing the Boundary
 - Capital Request Timeline
 - Possible Grandfather of
Students
 - Culture
 - Opportunities
 - Staffing
- 

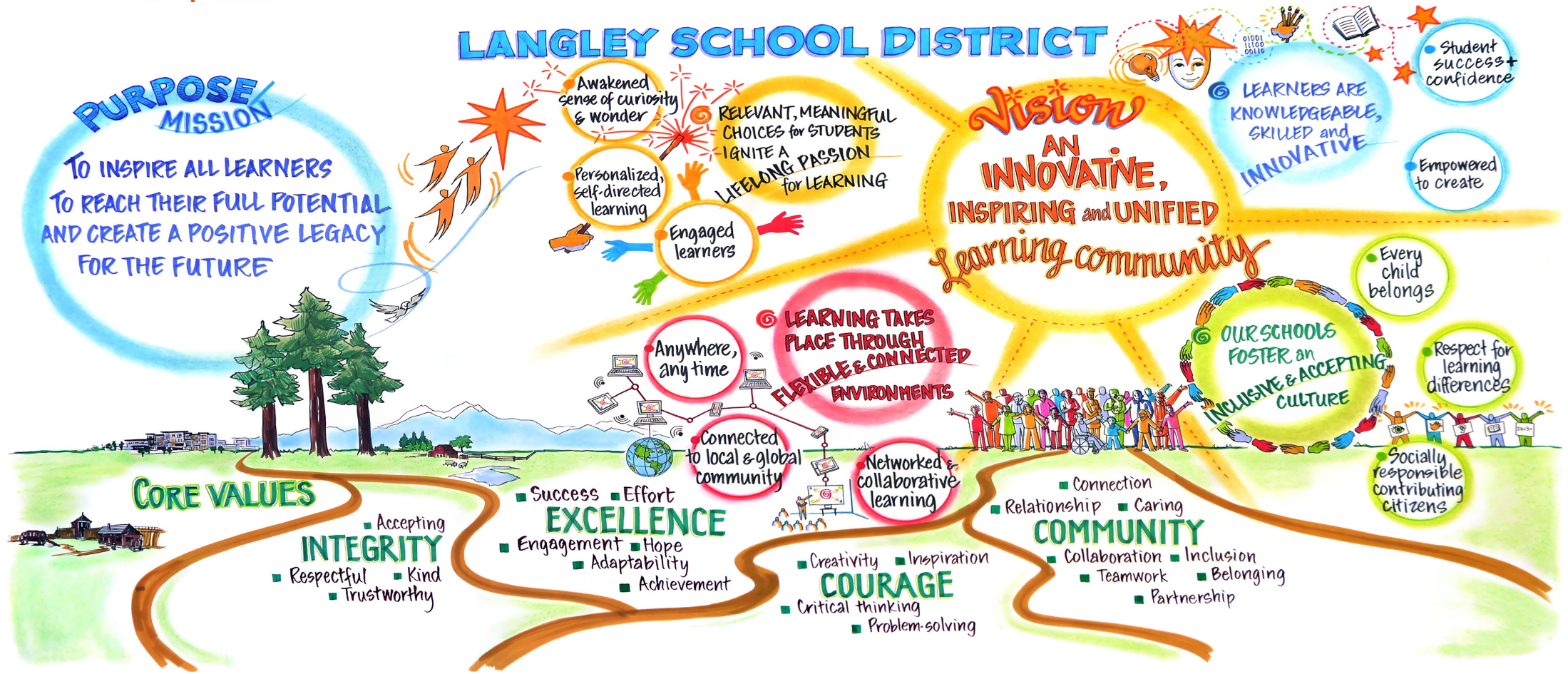
Opportunities

- Right sizing the middle schools in Willoughby
- Educational programming for students
- Culture
- Transition Opportunities
- LEC Facilities
- Secondary School Partnerships
- Neighborhood Middle School
- Stability

September Transition Meeting Agenda

- Welcome
- Context
- Background Information
- Drawing Boundaries–the District Process
- Middle school Boundaries
- Potential Student Enrolment in middle schools
- Considerations moving forward
- Potential Grandfathering
- Timeline
- Feedback

LANGLEY SCHOOL DISTRICT



Questions...

Working Groups

- What are some additional considerations we should be discussing during our meeting?
- What information does the community need to know regarding opportunities and challenges for the New Middle School?
- What are considerations for transition for students between and within the middle schools?