

Long Term Facilities Plan "Community Consultation"

Tuesday, December 2, 2014
3:30pm & 6:30pm
HD Stafford Middle School



Introductions



Purpose of the Meeting

To follow-up on a Board of Education motion from June 17, 2014 regarding Secondary School Options that indicated,

“That the Board requests a public consultation be undertaken in the Fall to explore these options with the broader school community.”

To continue the implementation of the Long Term Facilities Plan recommendations

- Langley Secondary School seismic requirements
- Willoughby Slope growth and needs

Purpose of the Meeting

To inform the community and to become informed by the community

To inform District Staff in preparing recommendations for the Board of Education

To inform a business case for the Board of Education to present to the Ministry of Education

Guiding Principles for an Effective Consultation Process

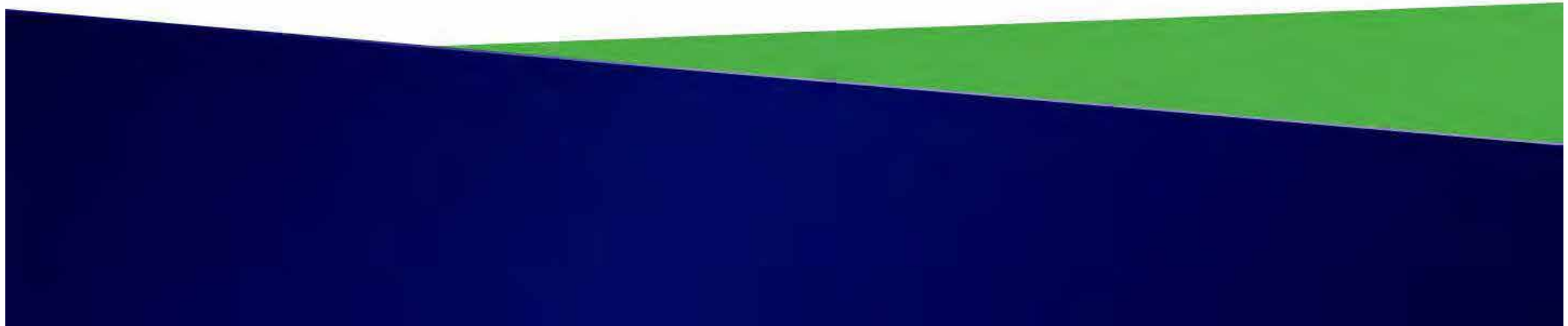
1. That the consultation process be one of integrity where honesty and transparency are of utmost importance.
2. That trust between communities and the District be developed and maintained throughout the process.
3. That the District listen to communities and sincerely reflect on feedback and ideas.
4. That the District value and honour community members and treat them with respect.

October 2, 2014

A Focus on Children

- ✓ **Caring for the social – emotional well-being of children**
- ✓ **Being mindful of the physical well-being of children**
- ✓ **Providing vibrant and sustainable learning opportunities for all children**

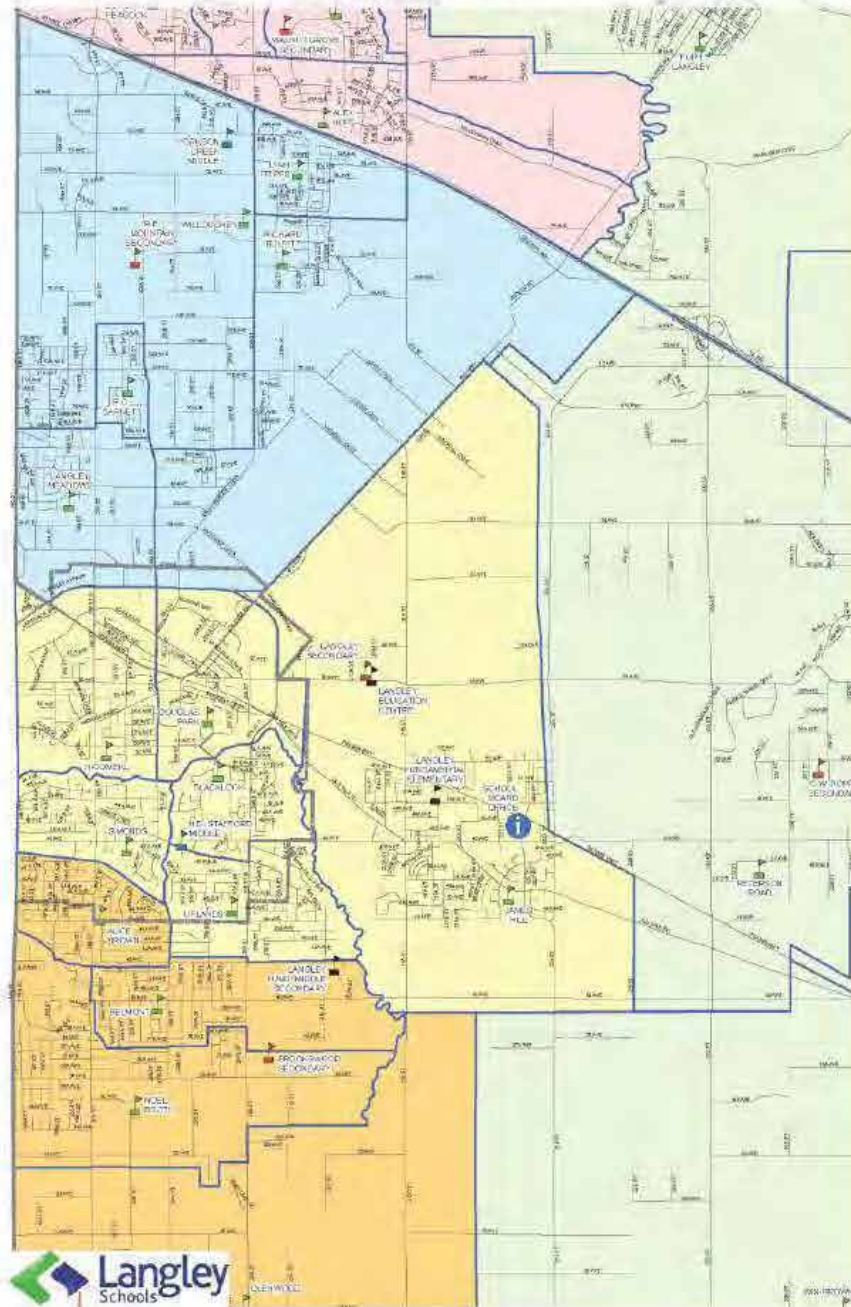
District Considerations



District Pressures

- ✓ **Seismic requirements at Langley Secondary School**
- ✓ **Rapid growth on the Willoughby slope**
- ✓ **Under enrolment capacity – excess space at some schools**
- ✓ **Limited capital funds to address facility needs**

Langley Schools – Brookwood, Langley City, and Willoughby – September 2014



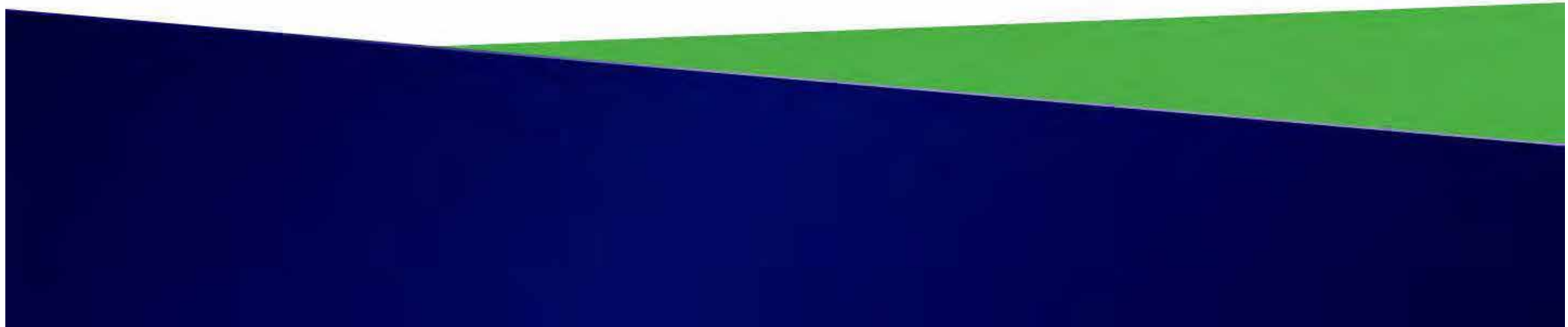
Community Consultation
December 1, 2 & 3, 2014



Status with the Ministry of Education

- ✓ **No funding at this time**
- ✓ **Timeline – to be determined**
 - ✓ Subject to funding
- ✓ **As a community, be ready with a plan**

Process



Process to Date

Meetings

- Board of Education
- Ministry of Education
- Local MLAs
- Township of Langley
 - Liaison Meeting
 - Meetings with Staff
- City of Langley
 - Liaison Meeting
 - Meetings with Staff
- Administrators
- District Staff

Process to Date

Meetings

- DPAC President and Vice-President
- Union representatives
- Parents from Langley Secondary and RE Mountain families of schools (October 2nd)
 - Guiding Principles
 - Format for Consultation

Process to Date

November 24th Meetings

- ▶ **Staff Meetings**
- ▶ **Community Meeting**
 - **Feedback and analysis**

24Nov2014 City Possibilities Feedback

File Edit View Insert Format Tools Table Add-ons Help All changes saved in Drive sn Comment

City Option #1 (MM) "Complete seismic updates at LSS" room 128	What other info about this possibility would you need wrt the PROCESS?	What other questions would you have about this possibility?	Other Comments
Group 1 (HDS)	How are you going to shift the students - do you have enough space to move kids?	Is it beneficial to upgrade a 50 year old building - will it last another 10 or 20 years or is it just a bandaid?	If we close this school in several years time will we need a school here again because growth patterns may

	<p>While the work is being done?</p> <p>How long will it take? What about health risks for the students (proper taping off of sections etc).</p> <p>Will it take a long time because of the condition of the school or is that the standard time? If it needs to be done, do it but have plans for the students?</p>	<p>If you're going to do the upgrade, what about the other things you'll need to bring up to date?</p> <p>Does this address the underground water issue?</p> <p>What is the price difference with upgrades and tearing it down and building a new one on the same site?</p>	<p>change again?</p> <p>What comes off the table if LSS is upgrade - what is the loss somewhere else?</p> <p>If there is no new school at the site, would we lose all the funding? Could we benefit financially from closing LSS?</p>
--	--	---	---

Process Moving Forward

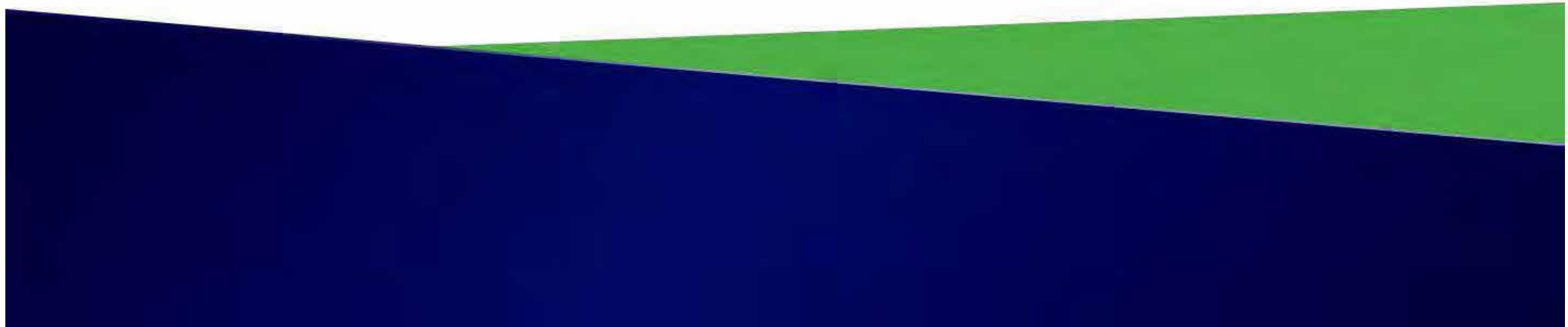
Suggestions from November 24th were incorporated into these presentations:

- Staff Meeting: Monday, December 1st, 7pm at the Langley Events Centre
- LSS Community: Tuesday, December 2nd, 3:30pm or 6:30pm at HD Stafford Middle School
- REMSS Community: Wednesday, December 3rd, 3:30pm or 6:30pm at RE Mountain Secondary School

Proposed Timeline

- ▶ December 16th
 - Regular Meeting of the Board of Education
- ▶ January – smaller group meeting
 - Date TBD
- ▶ January – staff meetings
- ▶ January 27th
 - Regular Meeting of the Board of Education
 - Recommendation on the business case*
- ▶ Date TBD
 - Implement the details of the plan, after Ministry approval

Possibilities

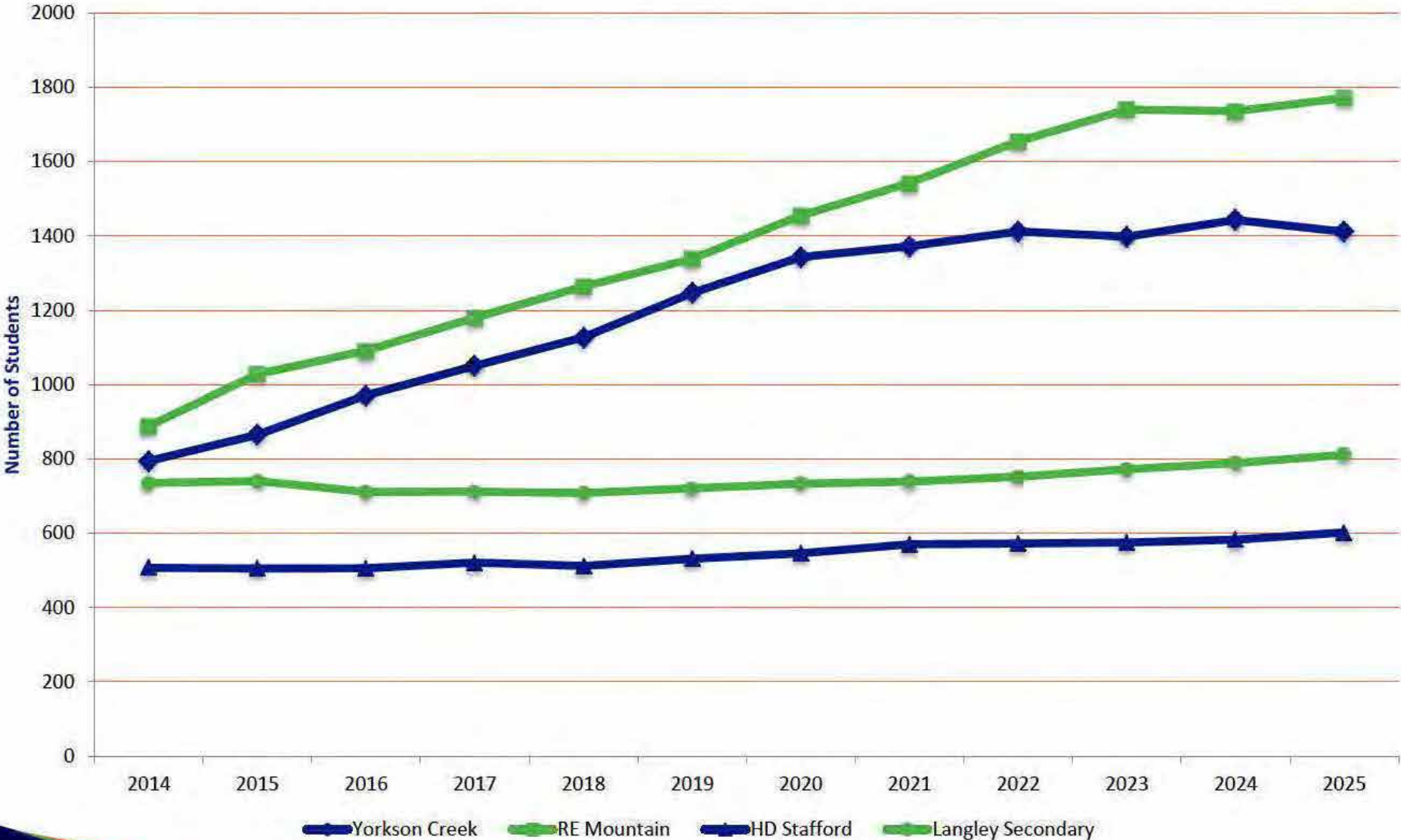


Two Communities ~ Inextricably Linked ~



Community Consultation
December 1, 2 & 3, 2014

Langley City & Willoughby - Projected Middle and Secondary Enrolments



Community Consultation
December 1, 2 & 3, 2014



City Schools

- ✓ **Complete seismic upgrade at Langley Secondary School**
- ✓ **Close Langley Secondary School**
 - HDSMS 9 - 12
 - Simonds 6 - 8
- ✓ **Close Langley Secondary School**
 - HDSMS feeds BSS

Willoughby Slope

- ✓ **Build a new 9 – 12 secondary school**
- ✓ **Build a new 6 – 8 middle school**
- ✓ **Business Case not accepted**

Langley Secondary Community



LSS Seismic Upgrade Completed

Langley Secondary School remains open

- Complete seismic upgrades
 - Same building but up to code in the event of an earthquake

Effects

- Students and staff remain at current locations
- Maintains current school cultures
- LSS is not located in an established community
- Only addresses seismic needs
 - Additional funds required to maintain the facilities
- Convenient access to athletic facilities
- Honours the historical legacy of LSS
- Maintains small cohort size and structural limitations to 21st century learning (parts of the building are 70 years old)
- Does not address the 21st century learning needs of both communities

**HD Stafford Becomes a 9 – 12
secondary school**

**Simonds becomes a 6 – 8 middle
school**

HD Stafford becomes a 9 – 12 secondary school



H.D. STAFFORD SECONDARY SCHOOL
CAPACITY: 1200 STUDENTS

Community Consultation
December 1, 2 & 3, 2014



Simonds becomes a 6 - 8 middle school



SIMONDS MIDDLE SCHOOL
CAPACITY: 600 STUDENTS

Community Consultation
December 1, 2 & 3, 2014



Effects

- Opportunities for 21st century learning structures
 - Collaborative & Flexible Learning
 - HD Stafford and Simonds
- LSS and HDSMS students move into remodeled schools in the City and within the neighbourhood
- Students and staff could move together*
- Maintains the LSS & HDSMS culture and community
- Simonds students attend another city school(s)
- Community impacted with move to HDMS and Simonds
- Exists within established neighbourhood
- Impacts on Strong Start, daycares, and preschools
- Same challenges of smaller cohort size remains

*requires consultation with, and agreement by, Unions and District

HD Stafford Middle students transition to BSS for high school

HDSMS becomes a BSS feeder school



BROOKSWOOD SECONDARY SCHOOL
CAPACITY: 1800 STUDENTS

Community Consultation
December 1, 2 & 3, 2014



Effects

- Langley Secondary students move into an expanded and enhanced Brookwood Secondary School
- Course offerings would be greater due to larger cohorts
- Students could move together
- LSS and BSS culture redefined
- Two entry points for BSS, grade 8 and grade 9
- May align with potential future growth in the Brookwood community

Langley Education Centre

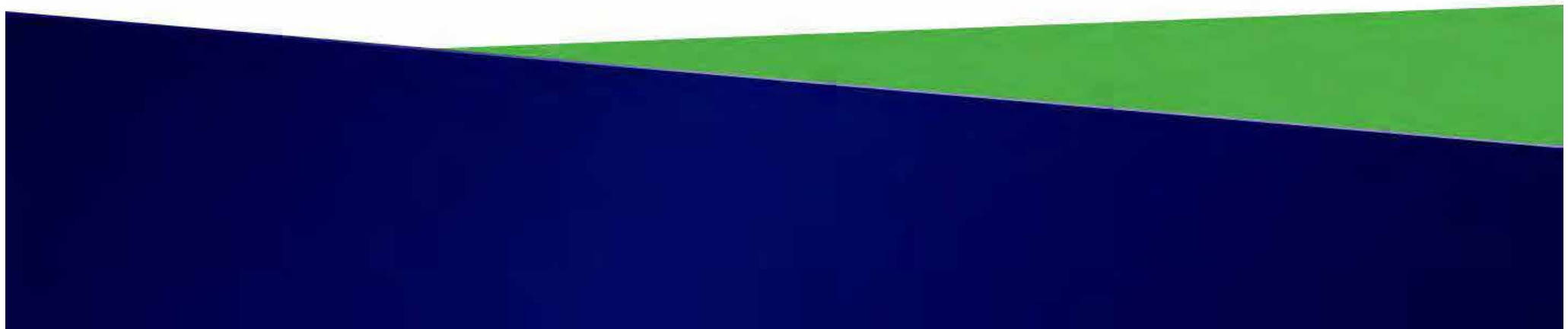
(Currently located at LSS)

Need to find a viable location

- Could provide students the option of a 7:30 am - 10 pm school*
- The goal is to create additional space to offer more opportunities and accommodate growing enrollment
- Could be located at more than one site

*subject to discussions with District and Unions

RE Mountain Community



Construct a new high school

Convert RE Mountain to a middle school

New Willoughby High School



Community Consultation
December 1, 2 & 3, 2014



Effects

- Convert RE Mountain to a middle school
 - Some seismic upgrades and enhancements required
- Enhances elective options at RE Mountain middle school
- Allows greater access to a wider range of courses and programs
- Creates modern learning environments
- Requires land acquisition
- Requires 42-48 months to complete a new secondary school (approx 1500 students)
- Requires a plan for overcrowding at YCMS
 - Addressed later in presentation

Construct a new middle school

Expand RE Mountain Secondary

New Willoughby Middle School



Community Consultation
December 1, 2 & 3, 2014



REMSS expanded



Community Consultation
December 1, 2 & 3, 2014

Effects

- Creates flexible, collaborative learning environments at both REMSS and the new middle school
- Allows for pod structure similar to Yorkson Creek Middle
- Requires land acquisition
- Requires a plan for students due to overcrowding at YCMS
- Requires 24–30 months to complete a new middle school
 - Shorter timeline compared to a new high school

Business Case Not Approved

Use existing facilities within the District

Effect

- Strengthens cohort size at other schools that are under capacity
- Students bussed or moved to other schools in the District for grades 9 – 12
- RE Mountain becomes a middle school
- Would need to determine a plan to address catchment and logistics to feed into other secondary schools if this option came into effect

Sources of Capital Funding

- ▶ Seismic Funding
- ▶ Property Sales
- ▶ Local Capital Funds
- ▶ Ministry of Education Funds



Two Communities Linked

- ▶ LSS Seismic Upgrade & Willoughby New Secondary School
 - Total cost of project (approx) \$95m
 - Ministry funding required (approx) \$60m
- ▶ LSS Seismic Upgrade & Willoughby New Middle School
 - Total cost of project (approx) \$85m
 - Ministry funding required (approx) \$50m

Two Communities Linked

- ▶ Close LSS; HDS & Simonds Conversions & Willoughby New Secondary School
 - Total cost of project (approx) \$92m
 - Ministry funding required (approx) \$45m
- ▶ Close LSS; HDS & Simonds Conversion & Willoughby New Middle School
 - Total cost of project (approx) \$85m
 - Ministry funding required (approx) \$35m

Two Communities Linked

- ▶ HDS becomes a BSS feeder & build a new Willoughby High School
 - Total cost of project (approx) \$90m
 - Ministry funding required (approx) \$40m
- ▶ HDS becomes a BSS feeder & build a new Willoughby Middle School
 - Total cost of project (approx) \$80m
 - Ministry funding required (approx) \$30m

Other Considerations

- ✓ **Large secondary school at LSS site**
- ✓ **Other possible locations for a middle school**
- ✓ **Possible trades Hub at LSS site and partnership with Post-Secondary institutions**
- ✓ **Close Langley Secondary; students attend other low enrolment secondary schools**

Moving Forward

Upon completion of consultation and once funding is available, a more detailed plan will be developed.

Communications

Website:

www.sd35.bc.ca/ltfp

Hash tag:

#SD35LTFP

Feedback email:

feedback@sd35.bc.ca

Newspaper Ads

School Newsletters

▶ FAQ consultation link

5. What is cohort size and the implications of cohort size - advantages to a big school vs a little school?

Cohort size refers to the number of students in each grade at a school. A larger school may have 250 kids to 400 Grade 9 students versus 100 to 200 students. When a cohort is larger, there are far more opportunities available to kids in that more varied course offerings are made available as well as more scheduling options within those choices. For example, a school with a small grade cohort may have 2 math offerings while a larger school may be able to offer 6 math options. With 2 math offerings, a student may have to drop an elective to fit a required math course due to a scheduling conflict. When there are 6 math offerings, a student has more timetable slots available to take math and electives at different times. A school with a larger population and cohort size there is an opportunity have have more varied course content offerings. A minimum class size can be reached for a 'more obscure' class like ceramics, for example. At a smaller school with a small cohort, our example may not meet a minimum class size to allow the class to go ahead. With a larger cohort, a class can reach that minimum and therefore the class can go ahead. The opportunities for students can be more varied, allowing children to try new things and draw the into positive activities.

Discussion



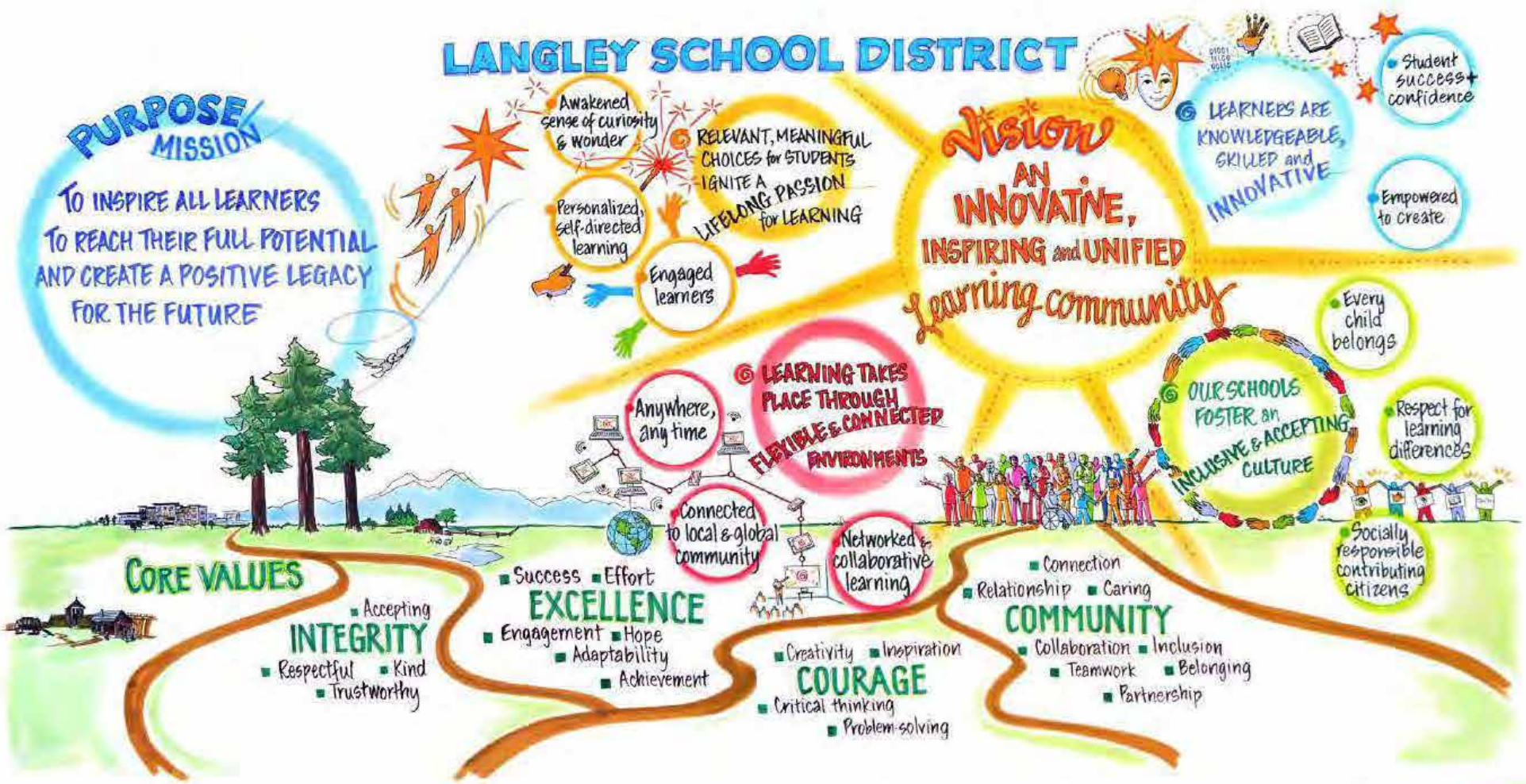
Discussion

- ▶ Tables 1 & 2 – Finance & Facilities
- ▶ Table 3 & 4 – Complete Seismic Upgrades at LSS
- ▶ Table 5 & 6 – HDSMS becomes a 9–12 school
– Convert Simonds to a middle school
- ▶ Tables 7 & 8 – HDSMS becomes a feeder of BSS

Discussion

- ▶ Table 9 – Other community options / LEC
- ▶ Table 10 – Learning Opportunities
 - Size of School & Cohort Size
- ▶ Table 11 – Learning Opportunities
 - Discussion on Middle Schools
- ▶ Table 12 – Why a discussion on community?
- ▶ Table 13 – Transportation
- ▶ Table 14 – Other Considerations

LANGLEY SCHOOL DISTRICT



Thank-you for Participating