

Superintendent's Report

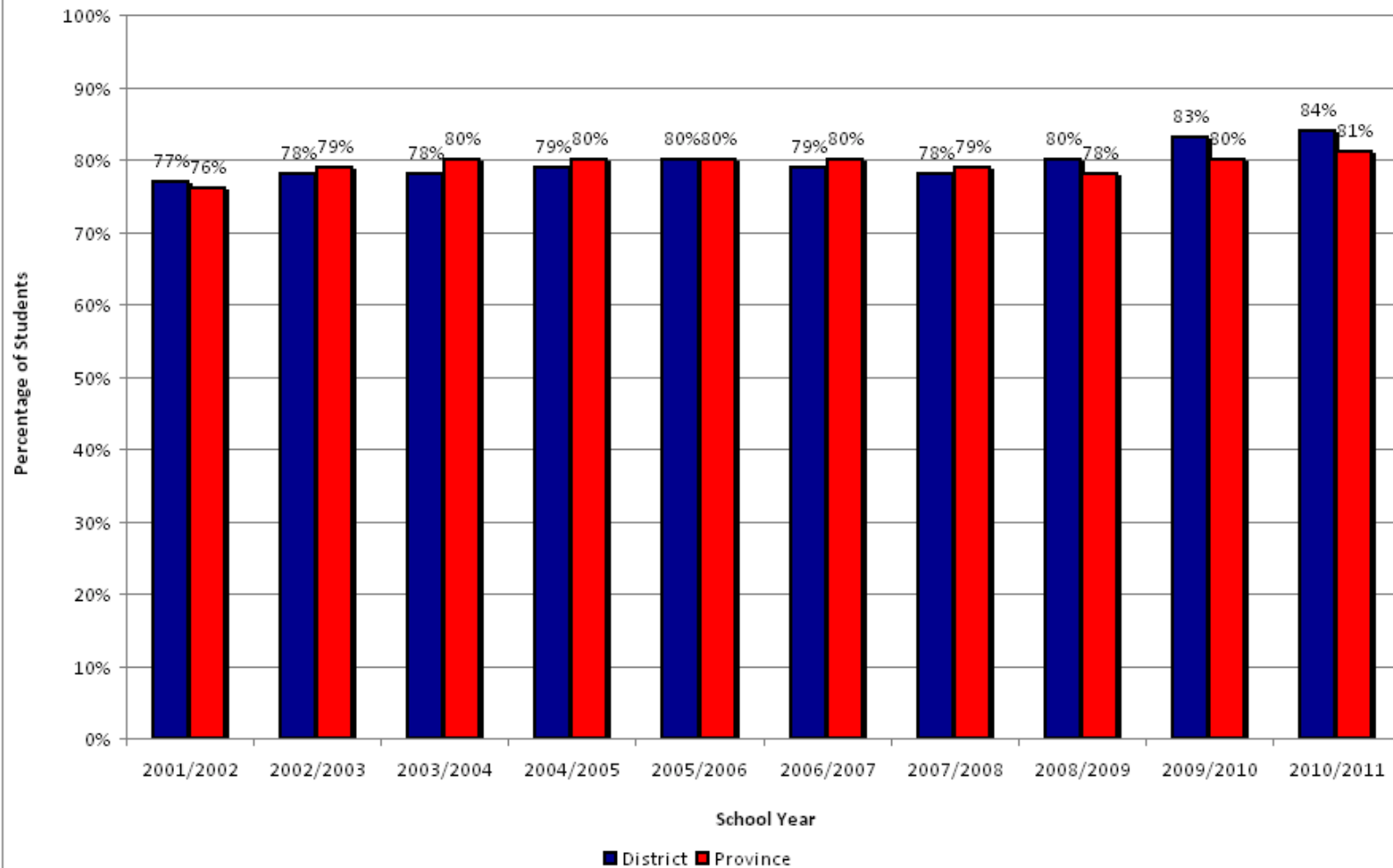


OUR GRADUATION RATE

Langley School District #35
Board of Education Meeting
Tuesday, December 13, 2011

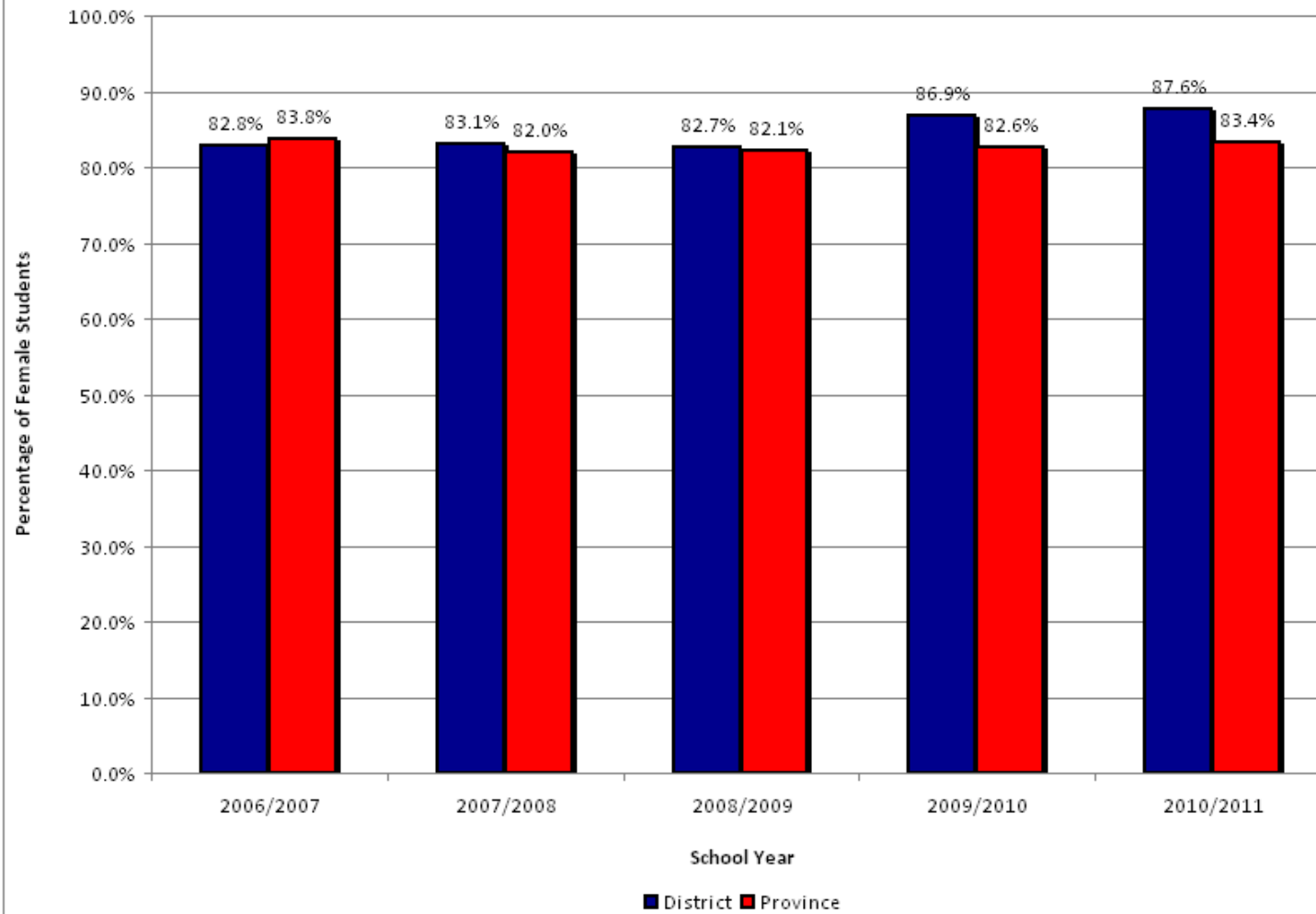


Six-Year Dogwood Completion Rates for All Students



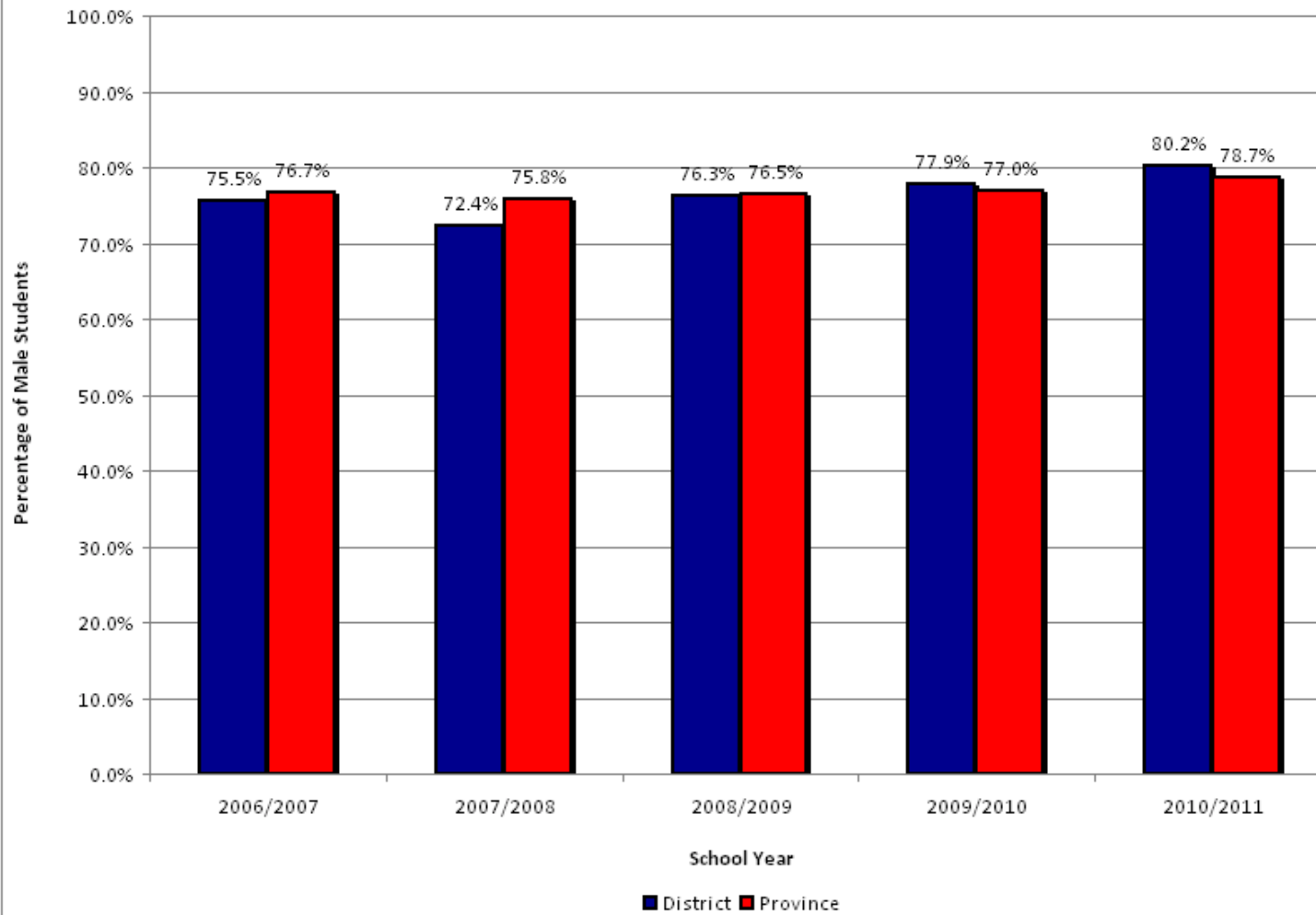


Six-Year Dogwood Completion Rates for Female Students



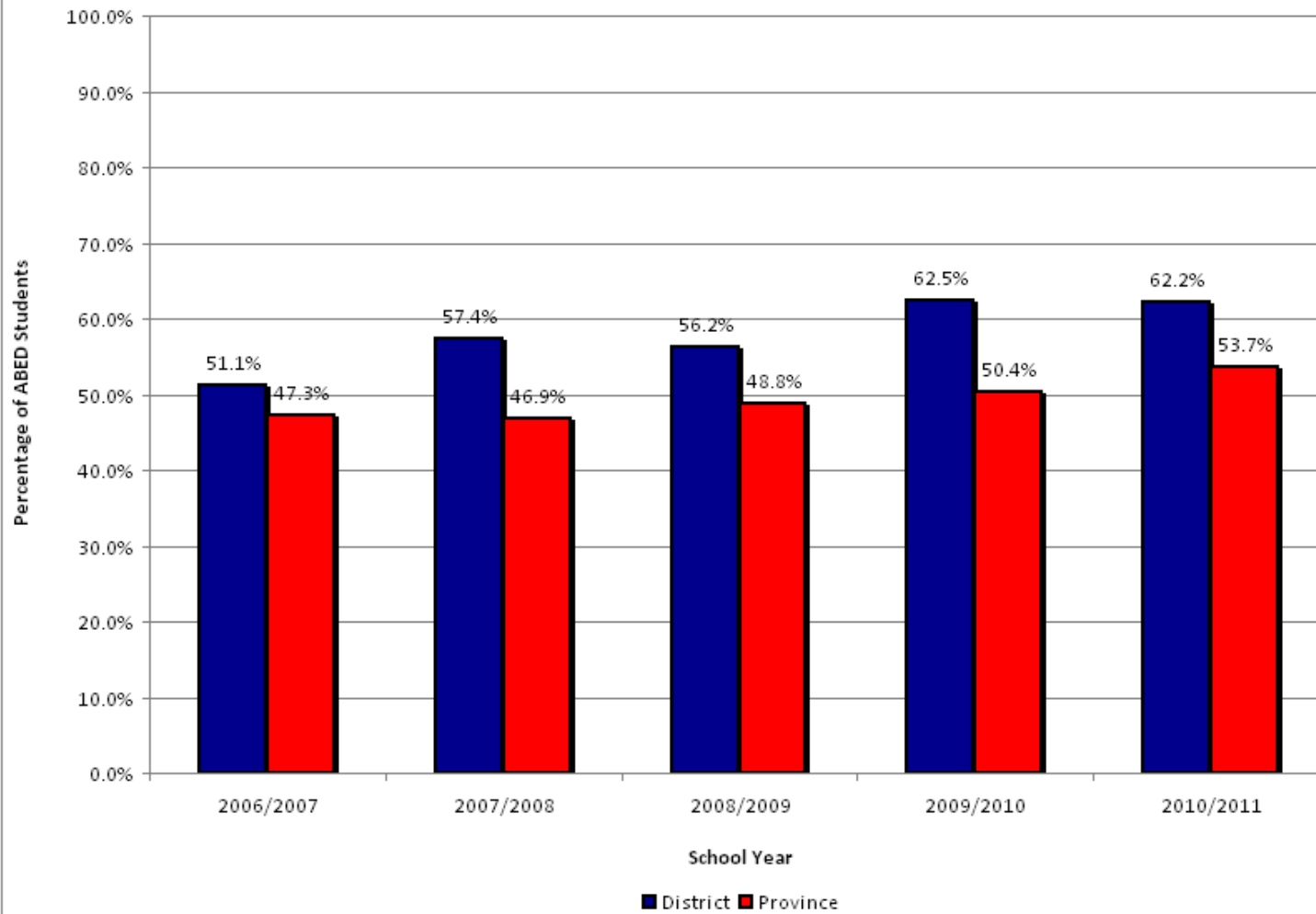


Six Year Dogwood Completion Rates for Male Students



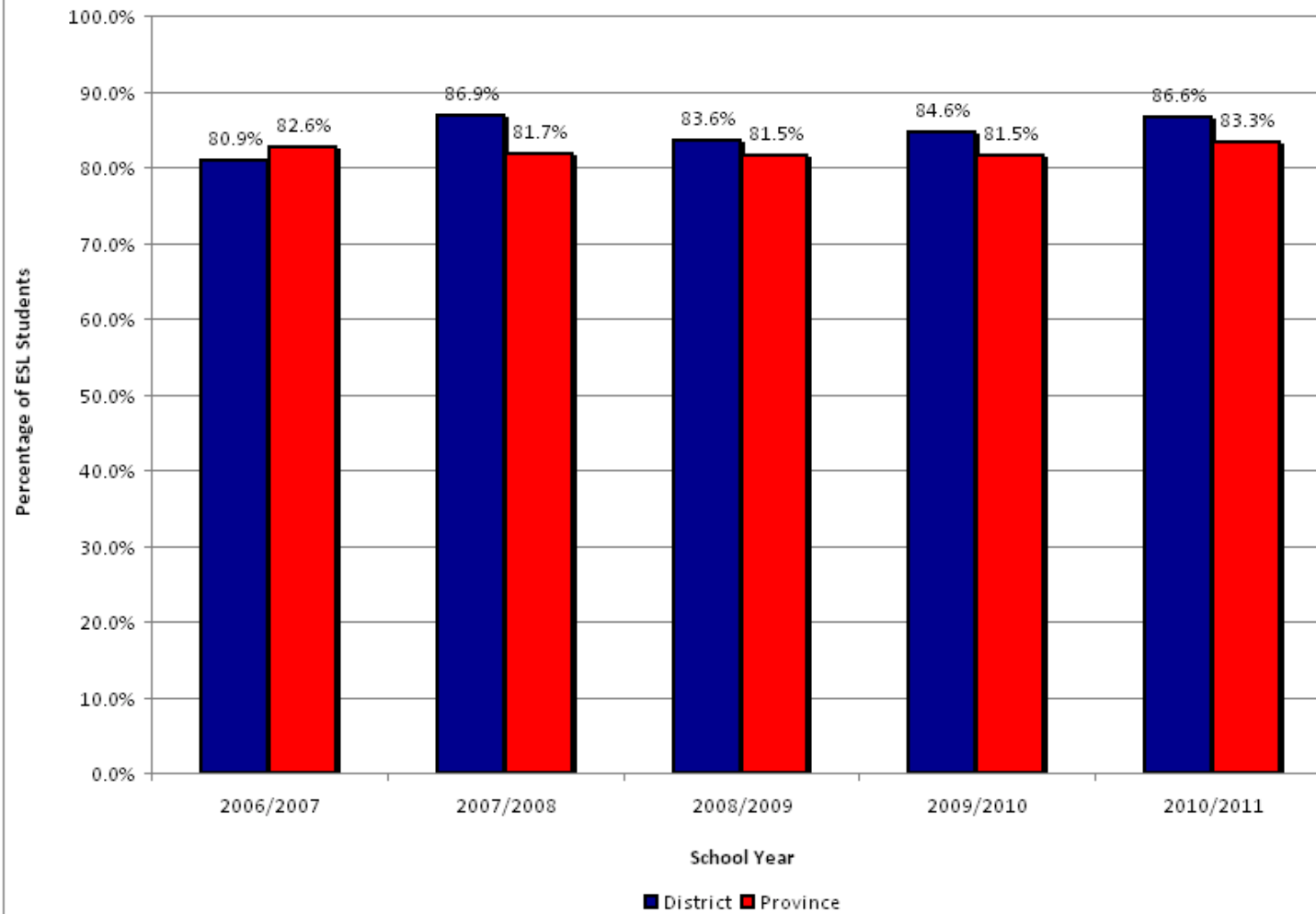


Six-Year Dogwood Completion Rates for Aboriginal Education Students



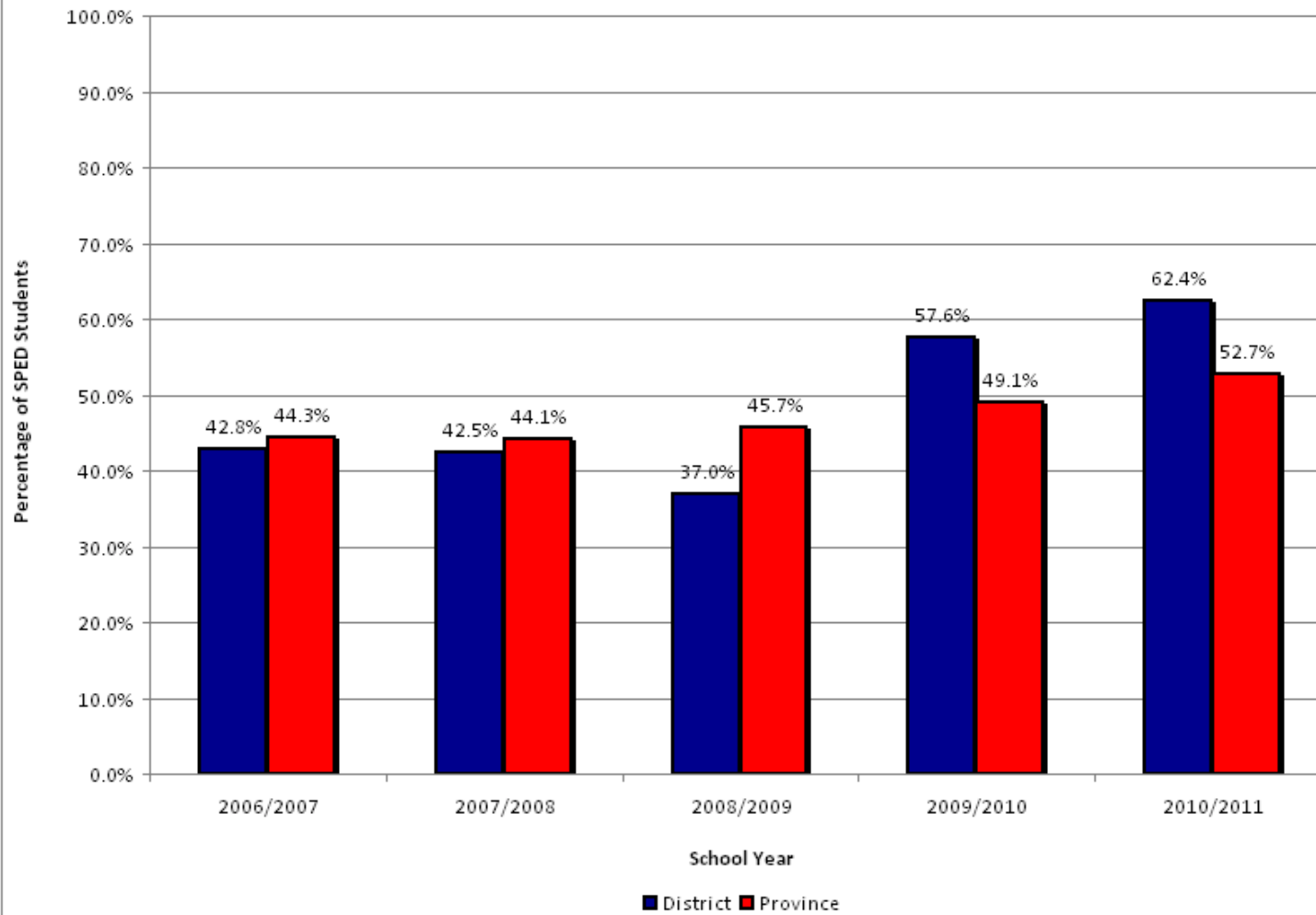


Six-Year Dogwood Completion Rates for English Language Learners





Six-Year Dogwood Completion Rates for Special Needs Students





COMPLETION RATES: SUCCESSSES

- ✓ **Overall completion rate increased to 84%**
- ✓ **Above the Provincial Average for the third straight year**
- ✓ **Female, Male, ELL and Special Needs completion rates are all increasing, above provincial average and at the highest levels in five years**
- ✓ **Aboriginal Education rates show improvement over the past five years**



COMPLETION RATES: NEXT STEPS

- ✓ We believe we can do even better
- ✓ Aboriginal Education rate showed slight decrease this year and focus needs to go on programming and support at the secondary level as well as for early learners



OUR GRADUATION RATE

This is the result of five years of focussed work and excellent commitment by our whole district.